



OLIVER N

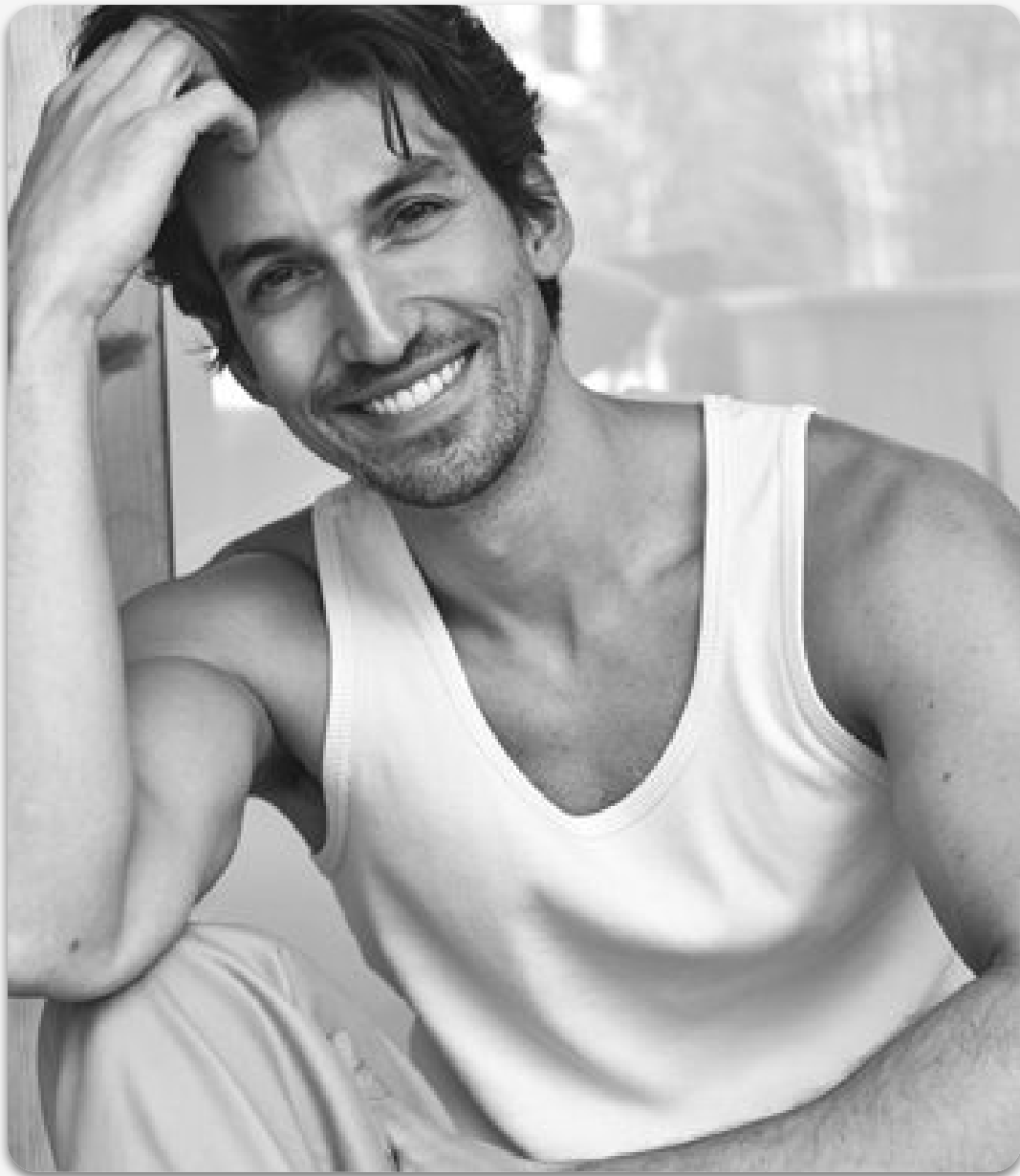
London

CATWALK | OUTERWEAR | SWIMWEAR



CLOTHES	S
HEIGHT	183
SHOULDER	43.5
COLLAR	37
CHEST	97
WAIST	80
TROUSER WAIST	81
TOP HIP	82
SEAT	95
NAPE/WAIST	42
BICEPS	31
ARM	65
THIGH	54
CALF	36.5
INSIDE LEG	77
SHOE	9.5





MAINBOARD

